

# 19<sup>th</sup> Street Rehabilitation Community Meeting

Public Works Department  
June 9, 2026

Bob Critchfield, Engineering Manager  
Kirk Swanner, Associate Engineer  
Elizabeth Ricci, Customer Service Specialist



# Agenda



- Introductions
- Meeting Format
- Project Background
- Project Funding
- Scope of Work
- Existing Conditions
- Street Trees
- Traffic Calming
- Breakout



# Introductions



## City of Upland

- City Council Members
  - Shannon Maust – District 1
  - James Breitling – District 2
- Engineering Staff
  - Kirk Swanner – Associate Engineer
  - Liz Ricci – Customer Service Specialist
- Operations Staff
  - Brett Lance – City Arborist

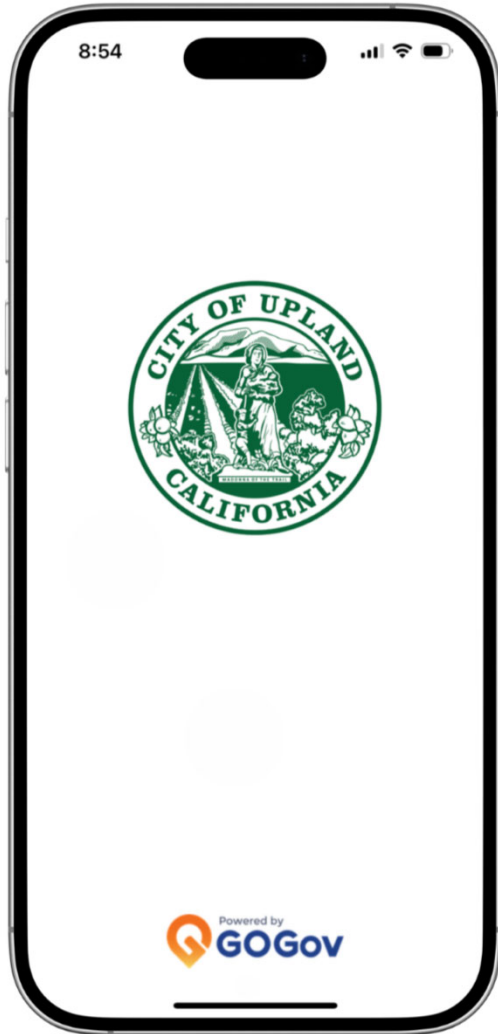
## Design Consultants

- Huitt-Zollars
  - Civil Engineering
  - Utility Design
  - Project Lead
- LSA
  - Environmental Consultant
- UXR
  - Traffic Consultant

# Meeting Format



- Introductory Presentation - Kirk Swanner
- Interactive Portion – Four Stations
  1. Traffic Calming – Urban Crossroads
  2. Street Trees – LSA & City Arborist
  3. Utility Design & Concrete Infrastructure – Huitt Zollars
  4. Comment Map – All comments & suggestions welcome!!



## Getting Started with UplandConnect

- Download the app
- Create an account
- Submit a service request
- Track your request
- Stay connected with the City



# 19<sup>th</sup> St. Pavement Rehab & Utility Imp.

## Project Background



- Project Scope
  - Concrete sidewalks, ADA ramps, curb & gutter, spandrels, cross-gutters
  - Water main upgrade, replace hydrants, replace water service laterals
  - Replacement of brick sewer manholes
  - Traffic signal improvements
  - Roadway rubberized hot mix asphalt paving
  - Traffic calming measures
- Project Budget:
  - \$3,963,939 Measure I Fund (Restricted County Tax)
  - \$1,984,600 Water Utility Fund (City Enterprise Fund)

# 19<sup>th</sup> St. Pavement Rehab & Utility Imp.

## Project Background



### Project Timeline

- Design Contract Signed by City Council – February 23, 2026
- First Community Meeting – June 9, 2026
- Second Community Meeting – Late Summer 2026
- Design Complete – Late Fall 2026
  
- Construction Begins – Summer 2027
  - Two Schedule Constraints
    - Nesting Season: February – August
    - Budget Allocation
- Construction Timeline – 7 to 9 months

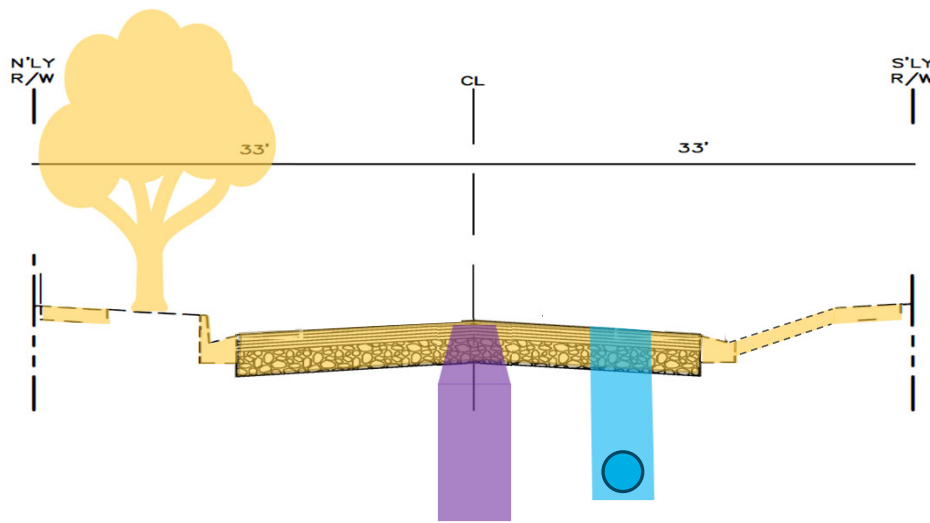
# 19<sup>th</sup> St. Pavement Rehab & Utility Imp.

## Project Funding



Fund	Fiscal Year 25/26	Fiscal Year 26/27	Fiscal Year 27/28	Total
Measure I – Restricted County Tax	\$1,863,939	-	\$2,100,000	\$3,963,939
Water Fund – City Enterprise Fund	\$404,000	\$500,000	\$1,084,600	\$1,984,600

# 19<sup>th</sup> St. Pavement Rehab & Utility Imp. Order of Construction



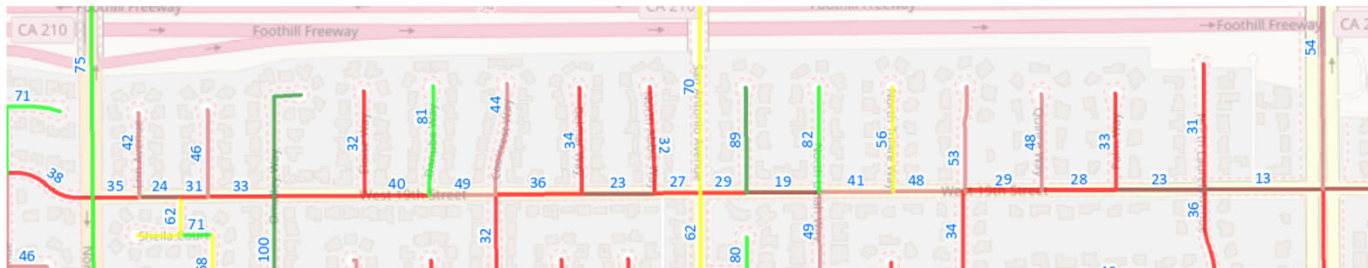
- Funding Source
- Measure I Fund
  - Water Utility Fund
  - Sewer Utility Fund

# 19<sup>th</sup> St. Pavement Rehab & Utility Imp.

## Existing Conditions



- PCI Score: Average 31
- Over 300 complaints on file from 2022 – 2026
- Heavy afternoon east bound traffic volume



# 19<sup>th</sup> St. Pavement Rehab & Utility Imp.

## Tree Removal



The Municipal Code pertaining to tree removal and replacement is 12.26.060.

Trees are removed in the following situations:

- Dead
- Diseased
- Hazardous
- Emergency condition exists which is a threat to public safety.
- Causing chronic and persistent damage to curbs, gutters, sidewalks or other hardscape and/or structures may be removed so improvements to the city's infrastructure can be made.

When healthy trees will not be removed:

- Leaves
- Pine cones,
- Pine needles,
- Fruit, or seed debris
- Any other perceived annoyance
- Roots from the tree have grown into a compromised sewer lateral

# 19<sup>th</sup> St. Pavement Rehab & Utility Imp.

## Existing Trees



Total Tree Locations: 193  
Total Oaks: 165  
Other: 28



- Southern Live Oaks 143
- Coast Live Oaks 19
- American Sweetgum 8
- Golden Medallion 4
- Holly Oaks 3
- Chinese Pistache 3
- Arizona Ash 2
- Brazilian Pepper 2
- Chinese Fringe 2
- Southern Magnolia 2
- Australian Willow 1
- Camphor 1
- Carrotwood 1
- Evergreen Pear 1
- Incense Cedar 1

# 19<sup>th</sup> St. Pavement Rehab & Utility Imp. Tree Removal



Per Environmental Consultant  
Tree Report:

- 55 trees with not repairs needed
- 29 trees to remain with ramping sidewalks
- 107 trees to be R&R or additional analysis/monitoring
- 2 trees need to be removed due to traffic conflict or sight distance

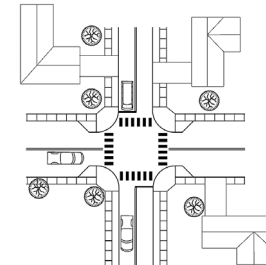
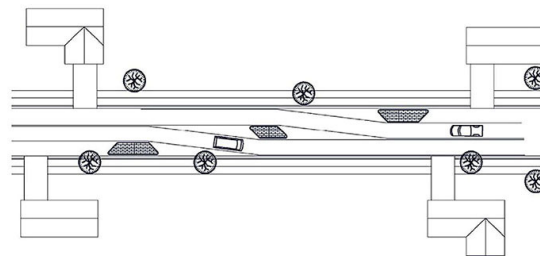
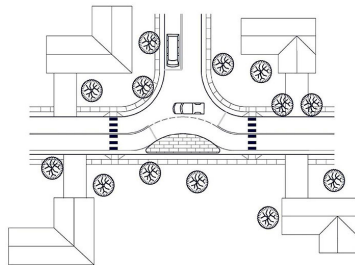


# 19<sup>th</sup> St. Pavement Rehab & Utility Imp.

## Traffic Design



- Methods to Reduce Traffic:
  - Reduce Evening Cut Through
  - Install Traffic Calming
- Traffic Safety relies on Three E's:
  - Engineering
  - Education
  - Enforcement





**Break Out Time!!**